



Product Catalog

Solar Mounting Solutions



ISO 9001: 2015 quality management system certified



Content

ABOUT US	03-08
Certificate	09-10
Rail & Accessories	11-18
Metal Roof Attachment	19-30
Tile Roof Attachment	31-36
U Plus Series	37-38
Tilt Mounting	39-42

Maxi Tripod System	43-44
Ballasted-PRO Mounting	45-46
Ballasted-ULT Mounting	47-48
Ballasted-Ult East-West Integrated Rear Leg	49-50
Ground Mounting	51-56
Pole Mounting	57-58
Carport Mounting	59-60
Waterproof Carport System	61-62

ABOUT US

Enerack

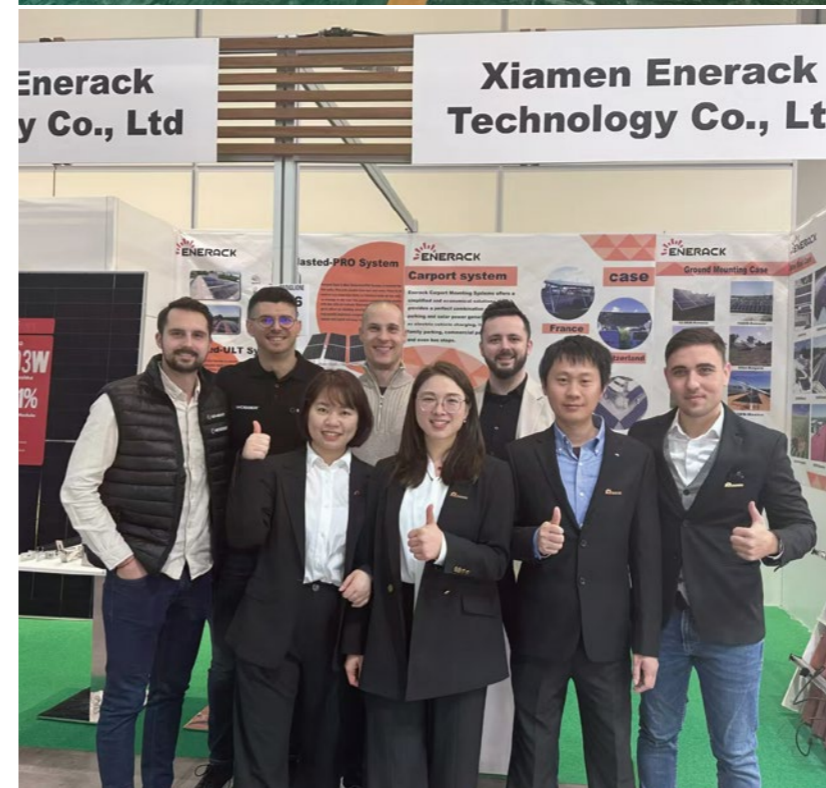
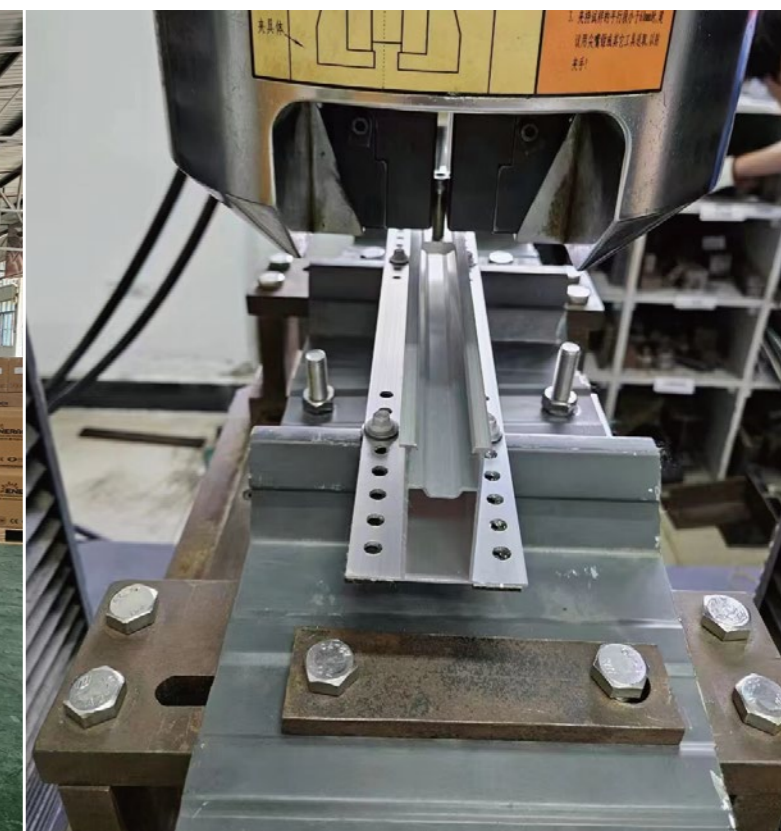
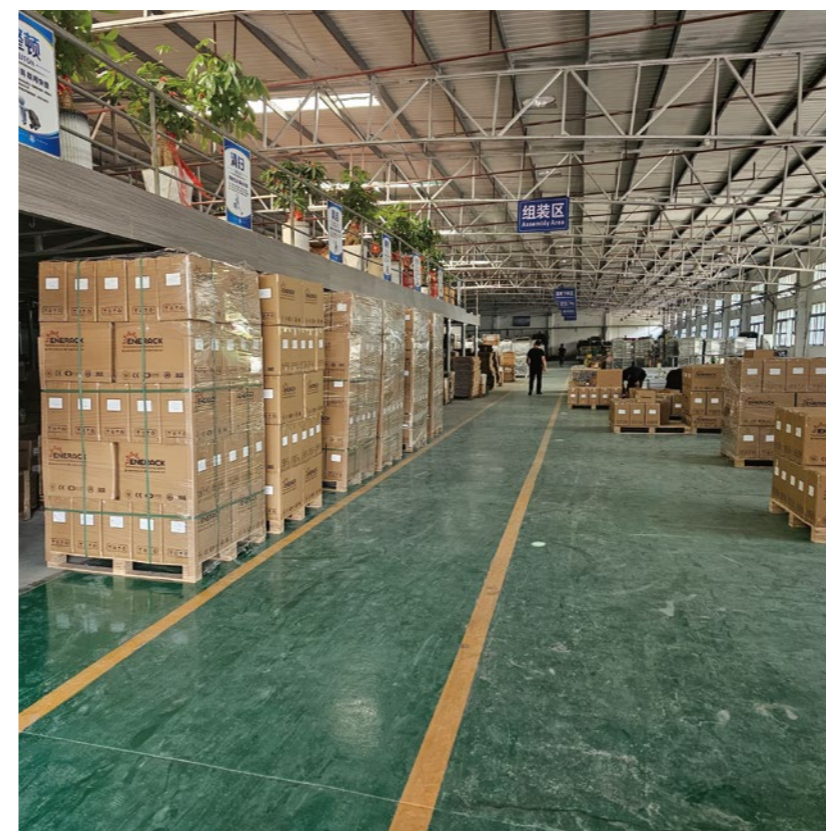
Xiamen Enerack Technology Co., Ltd. located in Xiamen city. Specialize in research, design, development, production, and service of solar PV Mounting systems. We are committed to providing customers with stable, reliable and cost-effective solutions of roof mounting system, ground mounting system, and construction of various photovoltaic power stations for civil and commercial use, government departments, power stations projects etc.

Enerack owns a factory, more than 80skilled workers, have more than 15 years experienced with solid expertise design kinds of the solar mounting systems for Metal roof, Tile roof, Flat roof, and Ground mount, Carport systems etc. Completion of several large-scale solar power station projects. With a complete R& D processing and high manufacturing capacity, strictly following ISO9001 quality control system.

Enerack products have passed the certification of TUV, UL 467, UL 2703, EN 1090 EXC 2 (system 2+), AS/NZS1170.2, and test with SGS, We have passed the ISO9001:2015 quality management system certification. Which are quality assurance for the products purchased by our customers. Our products design strictly in accordance with AS/NZS1170.2, JIS C 8955, MCS012, TUV, UL 467, UL 2703, EN 1090 EXC 2 (system 2+) European building codes and other standards. Ensure that every code and regulation is fully complied with all applicable local or national building codes.

Each of our products have repeated testing for strength and trial installation, to ensure our products to you are security, quality-assured, simply, high performance, economics and easy install. Adhering to a responsible society constantly innovates design concepts, draws on the development experience of the domestic and international solar PV industry and constantly improves product development.

Enerack offering innovative design and integrative settlement solution to our customers based on years of experiences on design, production and sale. We achieved good trust from customers because of our stable and excellent products. We will try our best to become a world leading level of solar photovoltaic systems integration solutions supplier.



Manufacturing facilities for both aluminum and steel products



Global service



Certification: TUV, UL 467, UL 2703, EN 1090 EXC 2 (system 2+), AS/NZS1170.2, and test with SGS



Direct racking supply



Experienced team since 2010



15 Years warranty



East & West Ballasted PRO-Romania



Pole Mount-Australia



Carport Mount-Bulgaria



East & West Ballasted PRO-Switzerland



Ground Mount-Thailand



Ground Mount-Romania



East & West Ballasted PRO-Croatia



Tile Roof Mount-Slovenia



Metal Roof Mount-New Zealand



Metal Roof & Carport Mount-Philippines



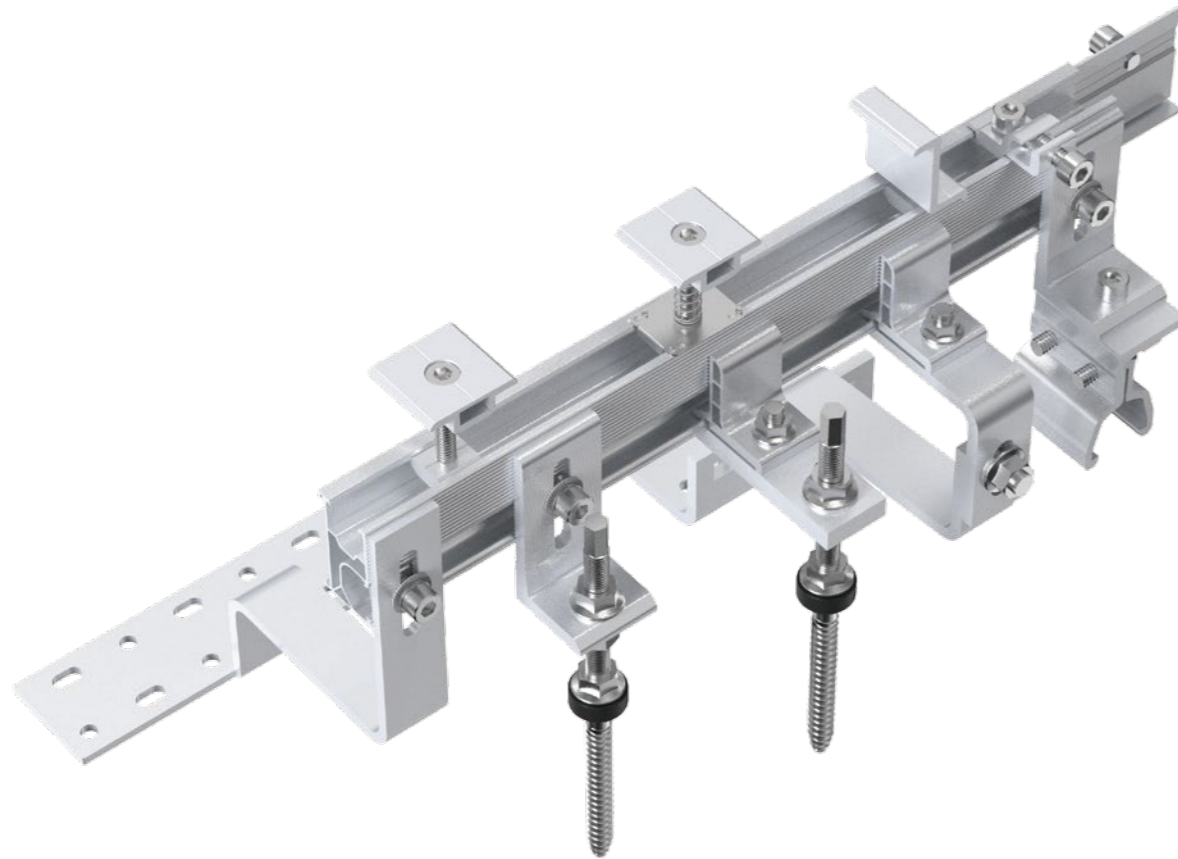
Ballasted PRO-Latvia



Tile Roof Mount-Hungary

Rail & Accessories

According to different markets, different customer requirements, as well as the project budget, we design and produce various types of rails and accessories to meet the customer's projects need. Each product is subjected to rigorous strength calculation, SGS testing, TUV, CE, and AS/NZS1170.2 certifications.



1 Item No. ERK-SFR-01
Description Splice for Rail Kit 01



2 Item No. ERK-SFR-02
Description Splice for Rail Kit 02



3 Item No. ERK-R52
Description Enerack 52mm Rail



4 Item No. ERK-R52L
Description Enerack 52mm L Rail



5 Item No. ERK-R62
Description Enerack 62mm Rail



6 Item No. ERK-R62C
Description Enerack 62mm C Rail



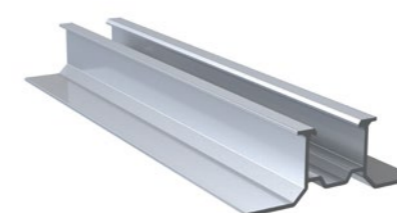
7 Item No. ERK-R60
Description Enerack 60mm Rail



8 Item No. ERK-R70
Description Enerack 70mm Rail



9 Item No. ERK-R26
Description Enerack 26mm Rail



10 Item No. ERK-R29
Description Enerack 29mm Rail



Rail & Accessories



11 Item No. ERK-R41-2
Description Enerack 41mm Rail for Ballasted Mounting



12 Item No. ERK-R42
Description Enerack 42mm Rail



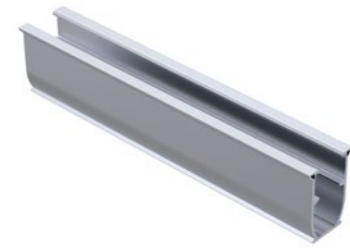
19 Item No. ERK-RCC
Description Standard Rail Clamp with the Carriage Bolt



20 Item No. ERK-FEC
Description General End Clamp Kit



13 Item No. ERK-R43
Description Enerack 43mm Rail



14 Item No. ERK-R46
Description Enerack 46mm Rail



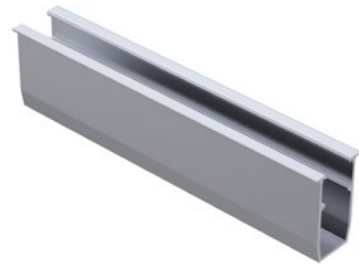
21 Item No. ERK-RCN
Description Standard Rail Clamp with ERK Nuts Kit



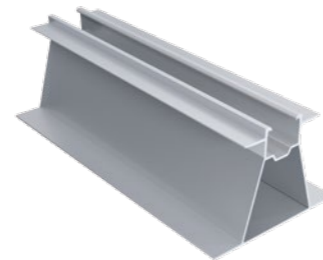
22 Item No. ERK-RCB
Description Standard Rail Clamp with T-Bolt Kit



15 Item No. ERK-R50
Description Enerack 50mm Rail



16 Item No. ERK-R65
Description Enerack 65mm Rail



23 Item No. ERK-FEC-3035
Description 30 & 35mm Exchange End Clamp Kit



24 Item No. ERK-FEC-3540
Description 35 & 40mm Exchange End Clamp Kit



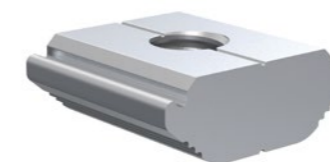
17 Item No. ERK-EIC
Description Universal Adjustable (30-40mm) Inner Clamp Kit (Include Spring & Earthing Clip)



18 Item No. ERK-AIC
Description Universal Adjustable (30-40mm) Inner Clamp Kit



25 Item No. ERK-NUT
Description ERK Nuts



26 Item No. ERK-REC
Description ERK-R52 Rail & ERK-R52L Rail End Cover Cap



Rail & Accessories



27 Item No. ERK-ELG-02
Description Earthing Lug Kit 02



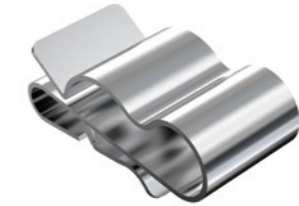
28 Item No. ERK-ELG-03
Description Earthing Lug Kit 03



Item No. ERK-CCP-03
Description Cable Clip for PV Panels for Holding 3 Cables



36 Item No. ERK-CCP-04
Description Cable Clip for PV Panels for Holding 2 Cables



29 Item No. ERK-ELG-05
Description Earthing lug kit 05 for 8mm cable



30 Item No. ERK-CCP-05
Description Cable Clip for PV Panels for Holding 4 Cables



37 Item No. ERK-TIC
Description Thin Film Double-glazed Module Inner Clamp Kit



38 Item No. ERK-TEC
Description Thin Film Double-glazed Module End Clamp Kit



31 Item No. ERK-CCP-01
Description Cable Clip for PV Panels for Holding 3 Cables



32 Item No. ERK-CCP-02
Description Cable Clip for PV Panels for Holding 2 Cables



39 Item No. ERK-REL-A
Description Standard Rail Earthing Plate Type A



40 Item No. ERK-REL-B
Description Standard Rail Earthing Plate Type B



33 Item No. ERK-CCP-06
Description Cable Clip for PV Panels for Holding 3 Cables



34 Item No. ERK-CCP-07
Description 90° Cable Clip for PV Panels for Holding 2 Cables



41 Item No. ERK-NBW
Description ERK Nuts Assembly with Bolt and Washer Kit



42 Item No. ERK-TBK
Description T-Bolt Kit



Rail & Accessories



43 Item No. ERK-ACL
Description Universal Adjustable (30-40mm)
Inner Clamp Kit L=60mm



44 Item No. ERK-ECL
Description Universal Adjustable (30-40mm)
Inner Clamp Kit (Include Spring & Earthing Clip) L=60mm



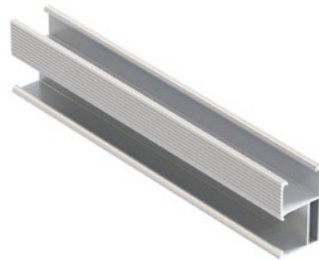
45 Item No. ERK-FCL
Description General End Clamp Kit L=60mm



46 Item No. ERK-NEC
Description New Universal Adjustable (27.5-35mm)
End Clamp Kit



47 Item No. ERK-R42B
Description Enerack 42mm B Rail



48 Item No. ERK-SFR-06
Description Inner Splice for Rail Kit 06



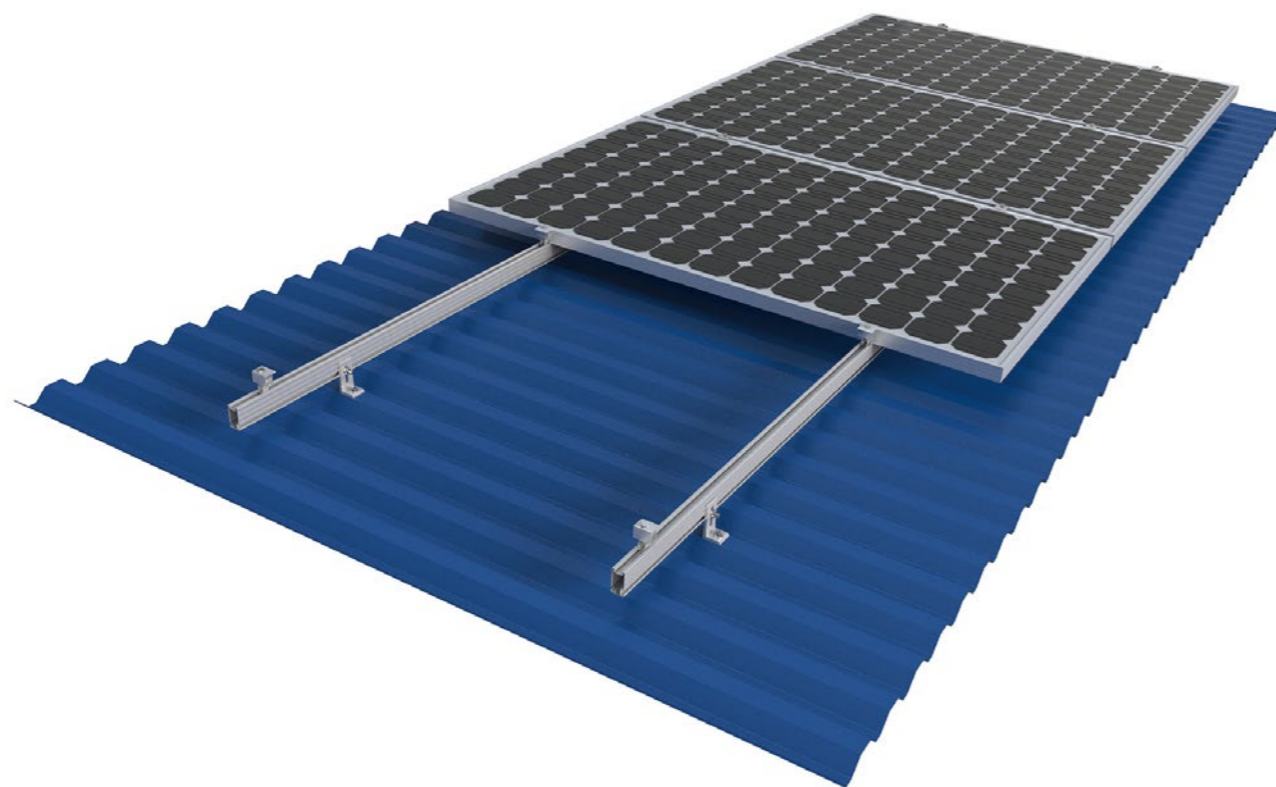
Metal Roof Attachment

Enerack Tin roof systems divided into two fixing methods:

1. Drilling solutions, like bracket L-feet, hanger bolt, T type hook etc.
2. Standing seam clamp, direct mounting, no damage to the roof.

A design that includes major specifications saves you inventory cost, quick and easy to install. Innovative design of rail connect base-support can effectively increase the product strength, ensure the safety of the product use. Enerack have a large variety of tin roof brackets for customers' choice Customization allowed according to customers' need to meet special installation requirements.

Technical features:	
Product name	Metal roof mounting system
Application	Metal roof
Inclination	Parallel to the roof
Material	AL 6005-T5, SUS 304, EPDM
Finish	AL 6005-T5 Anodized, SUS 304 Shot blasting
Module orientation	Landscape or Portrait



Item No. ERK-TRB-D01
Description L Feet for Corrugated or Trapezoidal Sheet Metal



Item No. ERK-TRB-D03
Description Hanger Bolt L Feet for Corrugated Fibre Cement, Corrugated or Trapezoidal Sheet Metal (M10×180, M10×200, M10×250, M10×300)



Item No. ERK-TRB-D05
Description Hanger Bolt for Corrugated Fibre Cement, Corrugated or Trapezoidal Sheet Metal (M10×180, M10×200, M10×250, M10×300)



Item No. ERK-TRB-D09
Description Asphalt Shingles Interface



Item No. ERK-TRB-D10
Description 26mm Mini Rail for Corrugated or Trapezoidal Sheet Metal



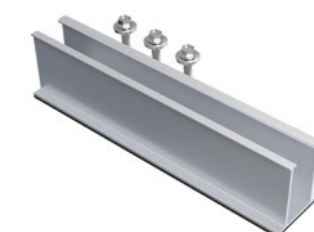
Item No. ERK-TRB-D11
Description 29mm U Type Rail for Corrugated or Trapezoidal Sheet Metal



Item No. ERK-TRB-D13
Description 60mm Mini Rail for Corrugated or Trapezoidal Sheet Metal



Item No. ERK-TRB-D14
Description 46mm Mini Rail for Corrugated or Trapezoidal Sheet Metal



Metal Roof Attachment



9
Item No. ERK-TRB-D20
Description 65mm Mini Rail for Corrugated or Trapezoidal Sheet Metal



10
Item No. ERK-TRB-D22
Description 142mm L Feet for Trapezoidal Sheet Metal



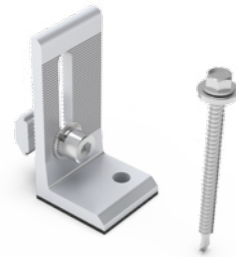
17
Item No. ERK-TRB-D06
Description 6# Tin Roof Hook for Trapezoidal Sheet Metal



18
Item No. ERK-TRB-D07
Description 7# Tin Roof Hook for Trapezoidal Sheet Metal



11
Item No. ERK-TRB-D25
Description Offset Hole L Feet for Corrugated or Trapezoidal Sheet Metal



12
Item No. ERK-TRB-D26
Description Hanger Bolt Offset Hole L Feet for Corrugated Fibre Cement, Corrugated or Trapezoidal Sheet Metal (M10×180, M10×200, M10×250, M10×300)



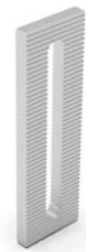
19
Item No. ERK-TRB-D08
Description 8# Tin Roof Hook for Trapezoidal Sheet Metal



20
Item No. ERK-TRB-D21
Description 21# Tin Roof Hook for Trapezoidal Sheet Metal



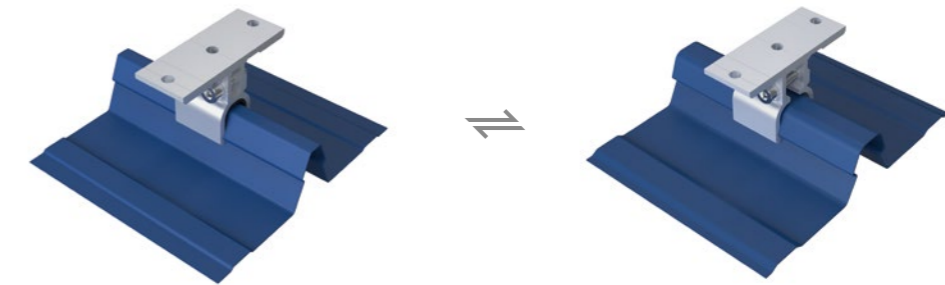
13
Item No. ERK-TRB-D27
Description Height adjust plate for L feet



14
Item No. ERK-TRB-D28
Description 70mm Mini Rail for Corrugated or Trapezoidal Sheet Metal



21
Item No. ERK-TRB-C01
Description Klip Lok 406 & 700 Interface



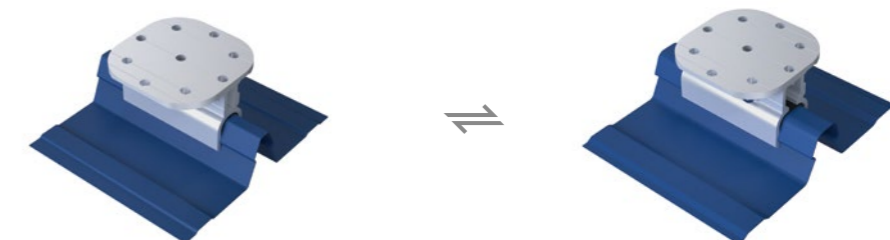
15
Item No. ERK-TRB-D29
Description 115mm T feet for Corrugated or Trapezoidal Sheet Metal



16
Item No. ERK-TRB-D30
Description 50mm U Type Rail for Corrugated or Trapezoidal Sheet Metal



22
Item No. ERK-TRB-C02
Description Klip Lok 406 & 700 Interface



Metal Roof Attachment



23
 Item No. ERK-TRB-C04
 Description Standing Seam Clamp



Item No. ERK-TRB-C13
 Description Lysaght Klip-lok Interface



27

24
 Item No. ERK-TRB-C05
 Description Standing Seam Clamp



Item No. ERK-TRB-C14
 Description Metdek 855 Dimondek 630 Interface



28

25
 Item No. ERK-TRB-C06
 Description Standing Seam Clamp



Item No. ERK-TRB-C15
 Description Metdek 500 Interface



29

26
 Item No. ERK-TRB-C10
 Description Stainless Steel Tin Interface Bracket



Item No. ERK-TRB-C16
 Description RiverClack Roofing Profile



30

Metal Roof Attachment



31

Item No. ERK-TRB-C20
Description Lysaght Klip-lok 406 Interface



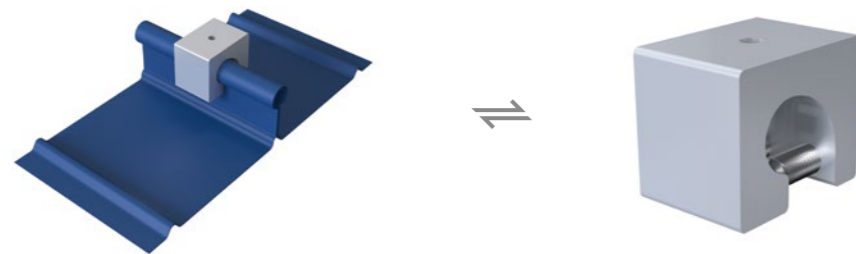
Item No. ERK-TRB-C24
Description Standing Seam Clamp



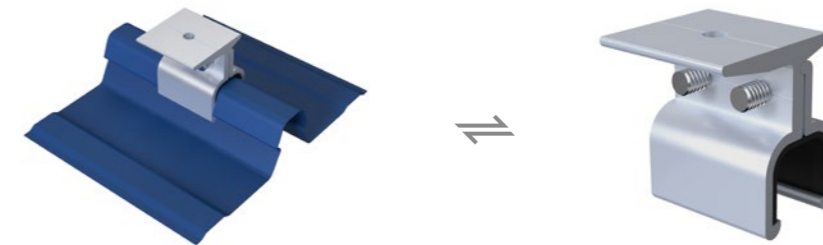
35

32

Item No. ERK-TRB-C21
Description Standing Seam Clamp



Item No. ERK-TRB-C25
Description Klip Lok 700 Interface



36

33

Item No. ERK-TRB-C22
Description Standing Seam Clamp



Item No. ERK-TRB-C26
Description WeatherClip II 700 Interface



37

34

Item No. ERK-TRB-C23
Description Klip Lok 700 Interface



Item No. ERK-TRB-C27
Description Klip Lok 700 Interface



38

Metal Roof Attachment

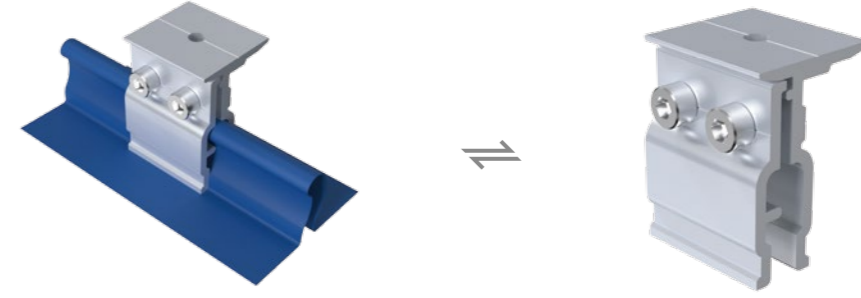


39

Item No. ERK-TRB-C29
Description Lysaght Klip-lok 406 Interface



Item No. ERK-TRB-C34
Description Standing Seam Clamp



43

40

Item No. ERK-TRB-C30
Description WeatherClip II 700 Interface



Item No. ERK-TRB-C36
Description Standing Seam Clamp



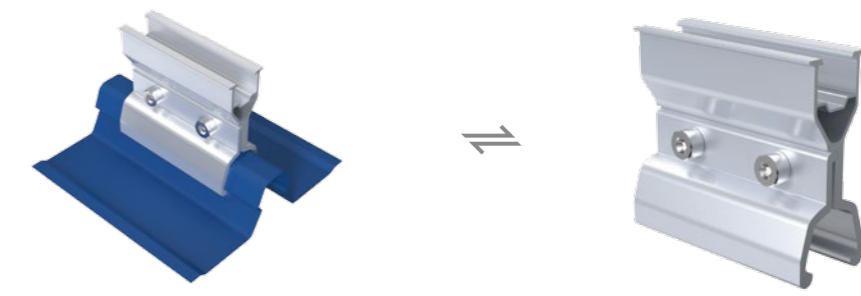
44

41

Item No. ERK-TRB-C32
Description Valio Metal Sheet Roof Interface



Item No. ERK-TRB-C38
Description Lysaght Klip-lok 700 Interface



45

42

Item No. ERK-TRB-C33
Description Standing Seam Clamp



Item No. ERK-TRB-C39
Description Lysaght Klip-lok 700 Interface



46

Metal Roof Attachment



47 Item No. ERK-TRB-D18
Description 18# Tin Roof Hook for Trapezoidal Sheet Metal



48 Item No. ERK-TRB-D31
Description 165mm L Feet for Corrugated or Trapezoidal Sheet Metal



49 Item No. ERK-TRB-D32
Description 152mm L Feet for Trapezoidal Sheet Metal



50 Item No. ERK-TRB-D33
Description 120mm Two Holes L Feet for Corrugated or Trapezoidal Sheet Metal



51 Item No. ERK-TRB-D34
Description Trapezoidal Sheet Metal Base



52 Item No. ERK-TRB-D35
Description Corrugated Sheet Metal Base



Tile Roof Attachment

Enerack has many types of tile roof hooks, suitable for most roof types of tile, flat tile, slate tile, asphalt shingle tile.

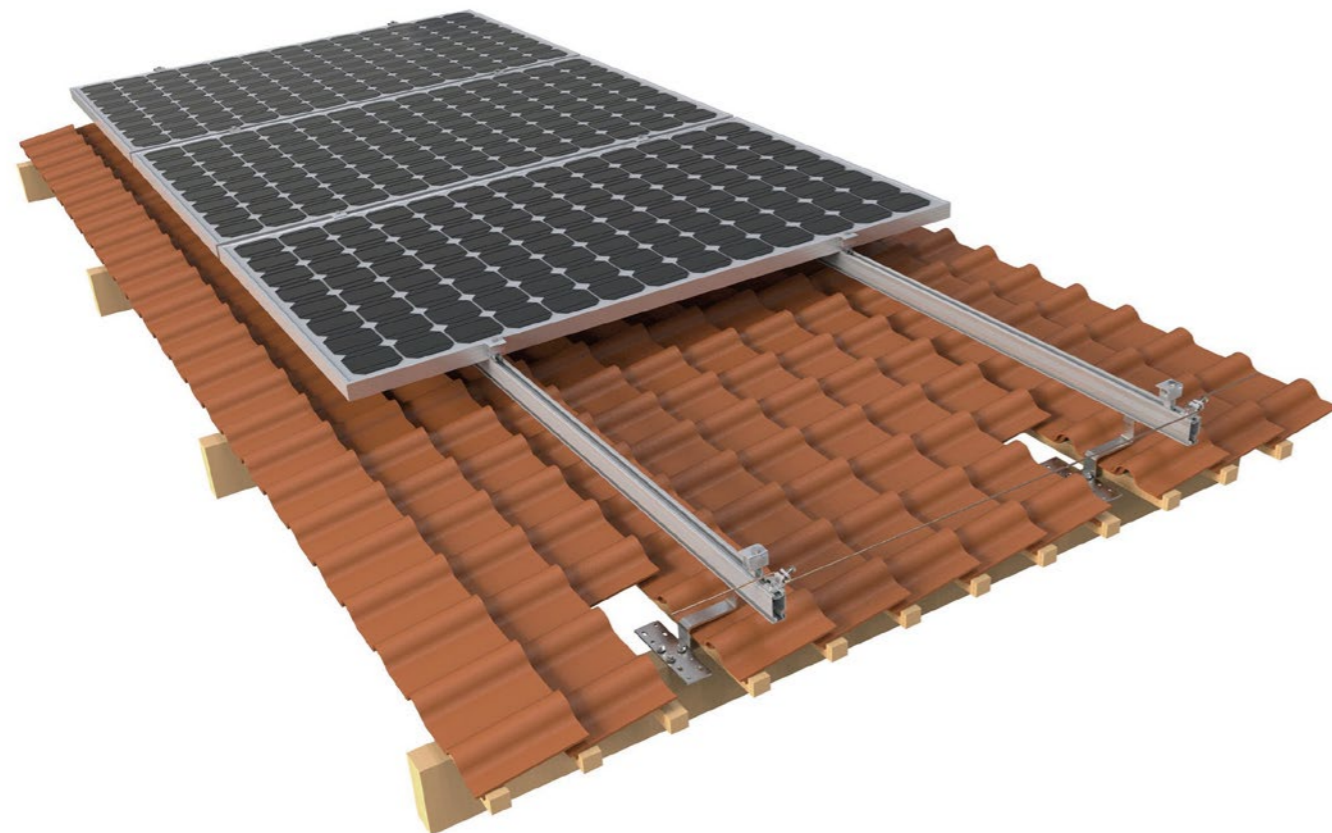
A design that includes major specifications saves you inventory cost, quick and easy to install. Innovative design of rail connect base-support can effectively increase the product strength, ensure the safety of the product use.

Enerack has a large variety of roof hooks provide customers options.

Customization allowed according to customers' need to meet special installation requirements.

Technical features:

Product name	Tile roof mounting system
Application	Tile roof, Flat tile roof, Slate roof
Inclination	Parallel to the roof
Material	AL 6005-T5, SUS 304
Finish	AL 6005-T5 Anodized, SUS 304 Shot blasting
Module orientation	Landscape or Portrait



Item No. ERK-TRH-T01
Description Tile Roof Hook



1

Item No. ERK-TRH-T02
Description Tile Roof Hook



2

Item No. ERK-TRH-T03
Description Tile Roof Hook



3

Item No. ERK-TRH-T04
Description Tile Roof Hook for Holding 3 Cables



4

Item No. ERK-TRH-T05
Description Tile Roof Hook



5

Item No. ERK-TRH-T06
Description Tile Roof Hook



6

Item No. ERK-TRH-T07
Description Tile Roof Hook



7

Item No. ERK-TRH-T08
Description Tile Roof Hook



8

Tile Roof Attachment



9

Item No. ERK-TRH-T09
Description Tile Roof Hook



10

Item No. ERK-TRH-T10
Description Tile Roof Hook



Item No. ERK-TRH-F01
Description Flat Tile Roof Hook



17

Item No. ERK-TRH-F02
Description Flat Tile Roof Hook



18

11

Item No. ERK-TRH-T11
Description Tile Roof Hook



12

Item No. ERK-TRH-T12
Description Tile Roof Hook



Item No. ERK-TRH-F03
Description Flat Tile Roof Hook



19

Item No. ERK-TRH-F04
Description Flat Tile Roof Hook



20

13

Item No. ERK-TRH-T13
Description Tile Roof Hook



14

Item No. ERK-TRH-T14
Description Tile Roof Hook



Item No. ERK-TRH-F05
Description Flat Tile Roof Hook



21

Item No. ERK-TRH-F06
Description Flat Tile Roof Hook



22

15

Item No. ERK-TRH-T15
Description Tile Roof Hook



16

Item No. ERK-TRH-T16
Description Tile Roof Hook



Item No. ERK-TRH-S01
Description Slate Roof Hook



23

Item No. ERK-TRH-S02
Description Slate Roof Hook



24

Tile Roof Attachment



25

Item No. ERK-TRH-S04
Description Slate Roof Hook



26

Item No. ERK-TRH-T18
Description Tile Roof Hook



Item No. ERK-TRH-T27
Description Tile Roof Hook



33

Item No. ERK-TRH-T28
Description Tile Roof Hook



34

27

Item No. ERK-TRH-T17
Description Tile Roof Hook

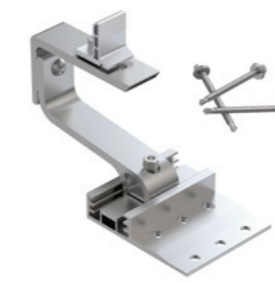


28

Item No. ERK-TRH-T19
Description Tile Roof Hook



Item No. ERK-TRH-T29
Description Adjustable Tile Roof Aluminum Hook



35

29

Item No. ERK-TRH-T20(t=6mm)
Description Tile Roof Hook



30

Item No. ERK-TRH-T22
Description Tile Roof Hook



31

Item No. ERK-TRH-T24
Description Tile Roof Hook



32

Item No. ERK-TRH-T26
Description Tile Roof Hook



U Plus Series



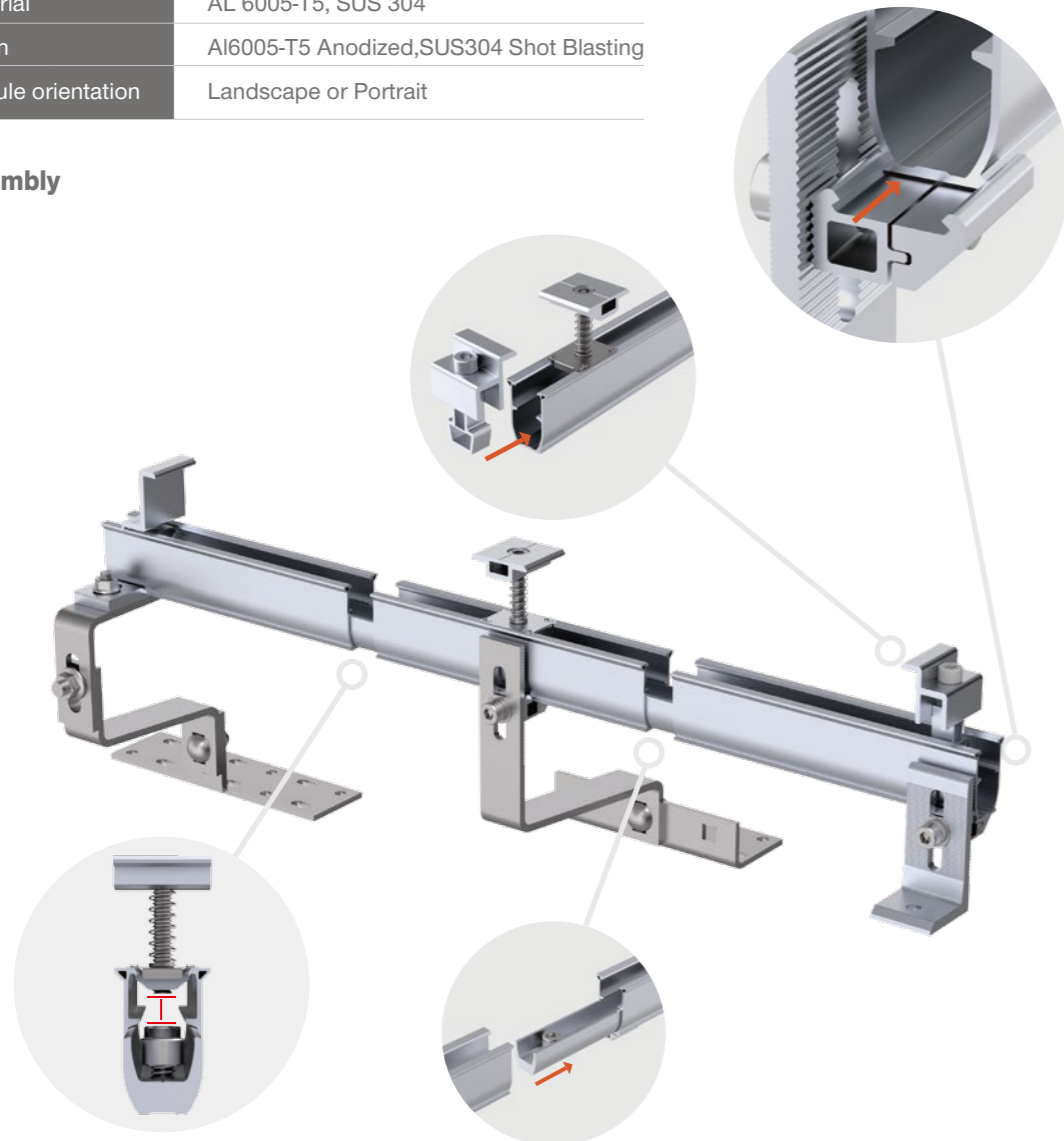
U Plus series is the new pitched roofs products of Enerack.

1. Use the U type rail and Aluminum clamps combination make installation easier and faster than traditional installation methods, saving more time for installer;
2. Hidden rail connection will be more beautiful and integrated, completely avoiding mutual interference with mid clamp;
3. The U type design of R43 rail can store cables inside the U type rail, making it more neatly and beautiful;
4. U Plus series can be fully compatible with the existing standard products of Enerack, so for this not need to worry;
5. We offer two colors silver and black oxidation for your choose.

Technical features:

Product name	U plus series
Application	Pitched roof
Inclination	Parallel to the roof
Material	AL 6005-T5, SUS 304
Finish	Al6005-T5 Anodized, SUS304 Shot Blasting
Module orientation	Landscape or Portrait

Assembly



Assembly



ERK-R43



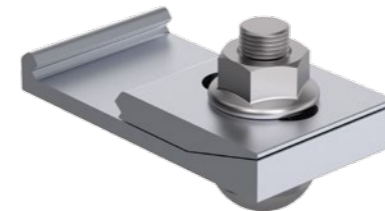
ERK-SFR-05



ERK-EIC



ERK-FEC

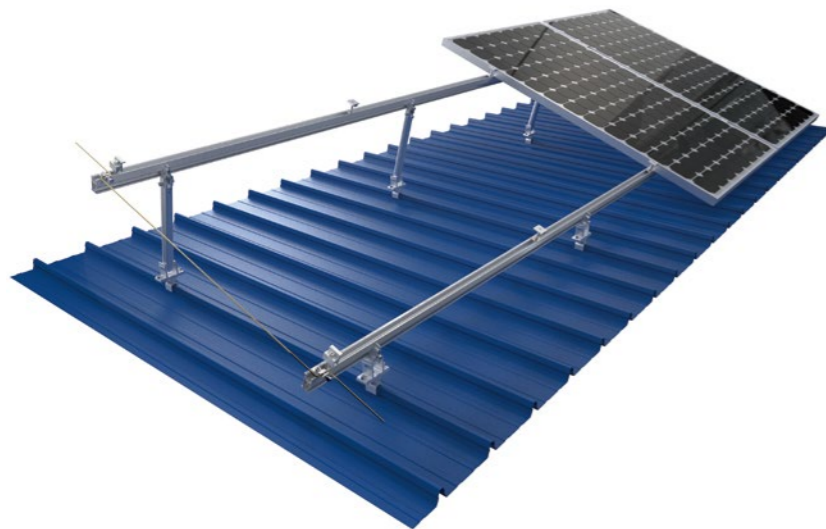


ERK-URC
(Suitable for horizontal fixed hooks such as D03 and T16)



ERK-UAC
(Suitable for vertical fixed hooks such as D01 and T01)

Tilt Mounting



Enerack adjustable tilt system is used for metal roof concrete roof. Fixed or adjustable angles as 10-15 deg, 15-30 deg and 30-60 degree are for your option to maximize energy production. All Products pre-assembled before shipment, to make the installation easy and quick. Unique design of inner and outer tube with adjustable joints, makes structure stronger, different from the same type products on the market today, and widely compatible with standing seam clamp.

Technical features:	
Product name	Adjustable tilt mounting system
Application	Flat concrete roof, metal roof
Inclination	10-15°, 15-30°, 30-60° or customized
Material	AL 6005-T5, SUS 304, EPDM
Finish	AL 6005-T5 Anodized
Module orientation	Landscape or Portrait

1 Assembly

Item No. | ERK-AFL
Description | Adjustable Front Leg



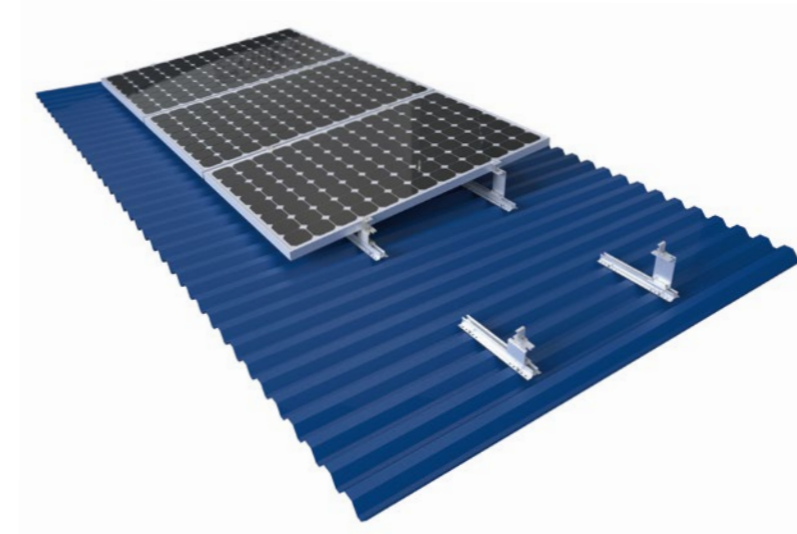
Item No. | ERK-FEC
Description | General End Clamp Kit



Item No. | ERK-EIC
Description | Universal Adjustable (30-40mm) Inner Clamp Kit (Include Spring & Earthing Clip)



Item No. | ERK-ARL-1015
ERK-ARL-1530
ERK-ARL-3060
Description | 10-15° Adjustable Rear Leg
15-30° Adjustable Rear Leg
30-60° Adjustable Rear Leg



Mini Rail with 5 degree support base, lift up the height of the solar panel to achieve cooling conditions, thus maximizing power generation. Simple design, easy to install, with good price.

Technical features:	
Product name	Mini Rail Support mounting system
Application	Metal roof
Inclination	5°, 10°
Material	AL 6005-T5, SUS 304
Finish	AL 6005-T5 Anodized
Module orientation	Portrait

Item No. ERK-MFS-5 Description Mini Rail 5° Support Front Leg	Item No. ERK-MRS-5 Description Mini Rail 5° Support Rear Leg	Item No. ERK-MFS-10 Description Mini Rail 10° Support Front Leg
--	---	--



1 Assembly

Item No. | ERK-FEC-BS
Description | General End Clamp Kit



Item No. | ERK-AIC-BS
Description | Universal Adjustable (30-40mm) Inner Clamp Kit



Item No. | ERK-TRB-D10
Description | 26mm Mini Rail for Corrugated or Trapezoidal Sheet Metal



Item No. | ERK-MRS-10
Description | Mini Rail 10° Support Rear Leg



Tilt Mounting



Enerack Tripod system is used for metal roof concrete roof, you can adjust angles as 10-15deg, 15-30deg and 30-60deg options to maximize energy production. All Products pre-assembled before shipment, to make the installation easy and quick for saving your labor cost and time. Customized angle allowed according to customers' need to meet special installation requirements.

Technical features:

Product name	Tripod mounting system
Application	Flat concrete roof, metal roof, open terrain
Inclination	Customized
Material	AL 6005-T5, SUS 304
Finish	AL 6005-T5 Anodized
Module orientation	Landscape or Portrait



1 Assembly

Item No. | ERK-FTP
Description | The Fixing Angle Tripod



Item No. | ERK-ATP
Description | The Adjustable Angle Tripod



Item No. | ERK-R52
Description | Enerack 52mm Rail



Item No. | ERK-EIC
Description | Universal Adjustable (30-40mm) Inner Clamp Kit (Include Spring & Earthing Clip)



Item No. | ERK-FEC
Description | General End Clamp Kit



Enerack Tripod systems have fixed angle and adjustable angle design for options.



1.Fixed Angle Tripod system(ERK-FTP-X): According to customers' need ,we customize different sizes and angles to make a fast, easy and lower cost installation, this is Suitable for installation at known building angle.



2.Adjustable Angel Tripod (ERK-ATP-X): According to the site need to adjust the tripod angle for installation demand. It is suitable for multi-angle installation projects.

2 Assembly

Beam



U Base



32-32 AL Tube



3 Assembly

Beam



U Base



32-32 AL Tube



27-27 AL Tube



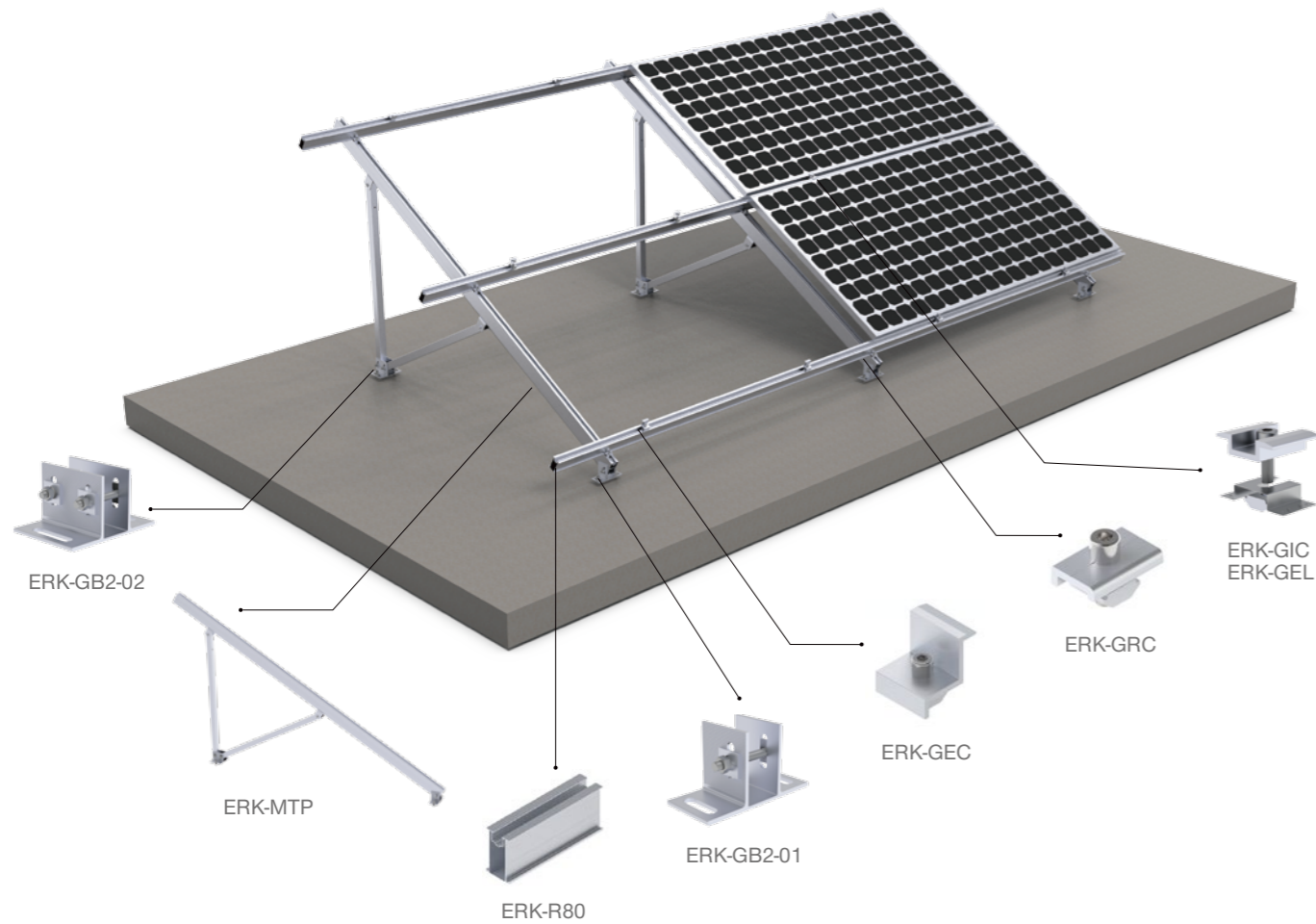
Maxi Tripod System

Large tripod Strong wind and snow resistance, simple and convenient installation, can be installed on the cement flat roof and the ground. Different angles can be designed to meet the sunshine requirements of different regions.

Technical features:

Product name	Maxi tripod mounting system
Application	Flat concrete roof, open terrain
Inclination	Customized
Material	AL 6005-T5, SUS 304
Finish	Anodized
Module orientation	Landscape or Portrait

Assembly



Assembly



ERK-MTP



ERK-GRC



ERK-R80



ERK-SFR-R80



ERK-GIC



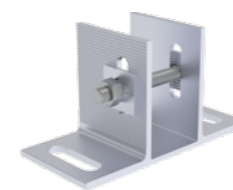
ERK-GEC



ERK-GEL



ERK-ELG

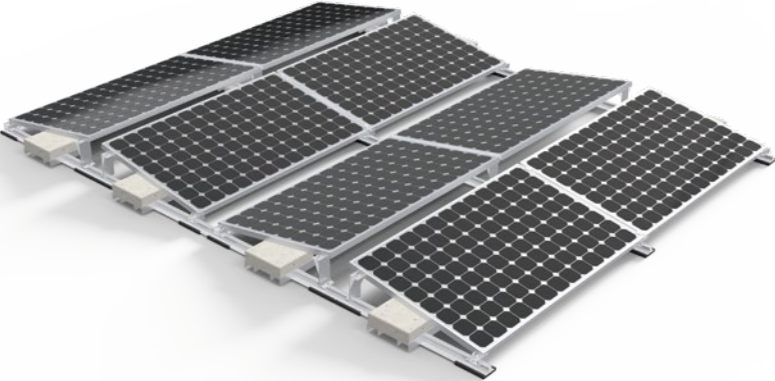


ERK-GB2-01



ERK-GB2-02

Ballasted-PRO Mounting



10 or 15 Degree dual tilt

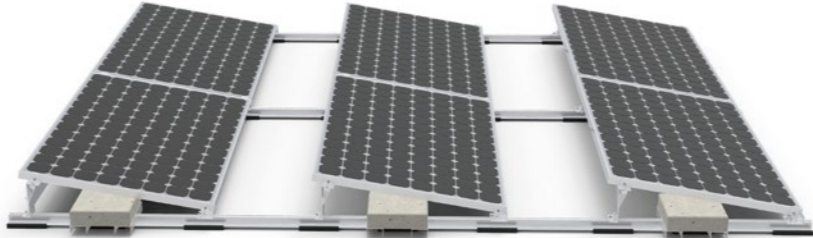
- Maximal area utilized
- Maximal PV quantity installed
- Enerack E-W 10 or 15 is for solar installed on a flat roof, for maximized roof space utilized, and PV quantity installed.
- All parts are made of extruded aluminum, with stainless steel 304 fasteners
- EPDM foam tape is installed at the bottom of the system, separated the roof and system.
- EPDM foam tape provides better friction, and compensates for the height difference when the roof is uneven.

Technical features:	
Product name	E-W 10 or 15
Application	Flat roof
Tilt	10° or 15°
System Material	extruded aluminum profile 6005 T5
Fastener material	Stainelss steel 304
Finish	Anodized
Module orientation	Landscape



1 Assembly

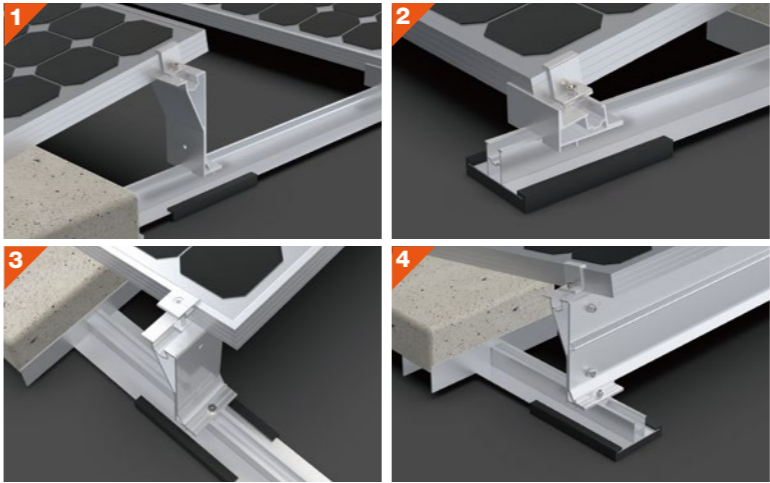
- ERK-AIC
- ERK-FEC
- ERK-BPF-10
- ERK-BPR-10
- ERK-BPF15
- ERK-BPR15



10 or 15 Degree tilt

- Better panel output
- The Enerack S Ballast is for solar PV to be fast and easily installed on a flat roof with 10 or 15 tilt degree inclination. All parts are made of extruded aluminum, with stainless steel 304 fasteners
- EPDM foam tape is installed at the bottom of the system, separated the roof and system.
- EPDM foam tape provides better friction and compensates for the height difference when the roof is uneven.

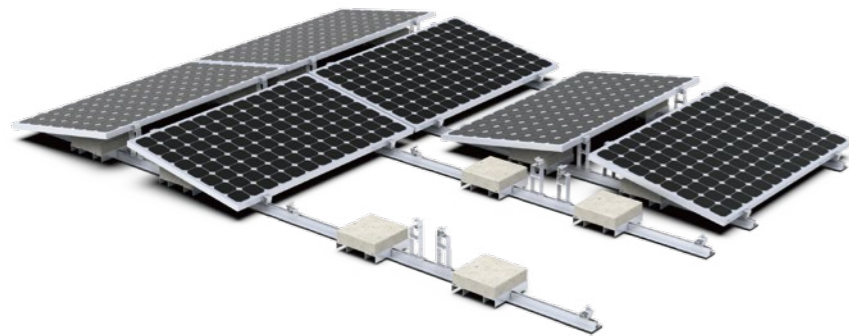
Technical features:	
Product name	S 10 or 15
Application	Flat roof
Tilt	10° or 15°
System Material	extruded aluminum profile 6005 T5
Fastener material	Stainelss steel 304
Finish	Anodized
Module orientation	Landscape



2 Assembly

- ERK-R41-02
- ERK-BST-02
- ERK-SFR-04
- ERK-EFT-03

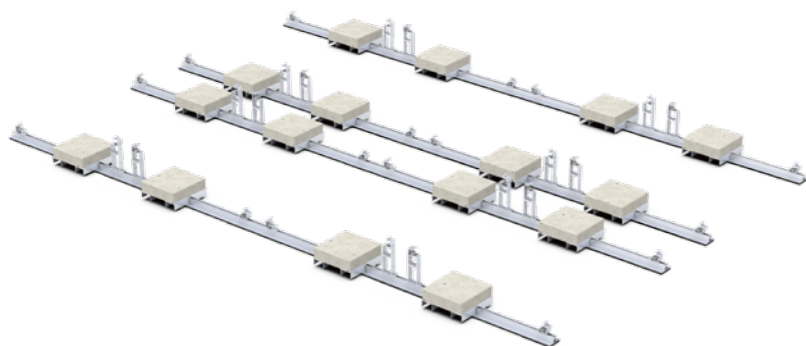
Ballasted-ULT Mounting



Enerack East & West Ballasted-Ult Systems suitable for concrete flat roof and trapezoidal sheet metal roof. Unlike the traditional solar panel fixing method, whose fixing point at the end of the long side of the panel, this series help solar panels to be fixed anywhere on the long side. Therefore, solar panels could withstand greater wind and snow pressure. There is no need to use expansion bolts or chemical bolts on the roof, no damage to roof. The system connects all the panels with the rails into a whole. East-west facing panels have a great effect on resisting wind loads. A combination of high quality aluminium components make a robust, reliable system and quick and easy installation.

Technical features:

Product name	Ballasted-ULT Series
Application	Concrete flat roof and trapezoidal sheet metal roof
Tilt	10° or 15°
System Material	Extruded aluminum profile 6005 T5, EPDM
Fastener material	Stainless steel 304
Finish	Anodized
Module orientation	Landscape



1 Assembly

ERK-BUF-10



ERK-BUR-10



ERK-R41-02



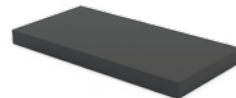
ERK-BST-02



ERK-SFR-04

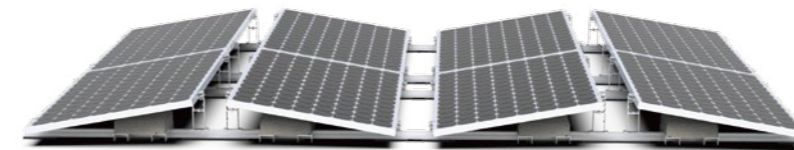


ERK-EFT-03

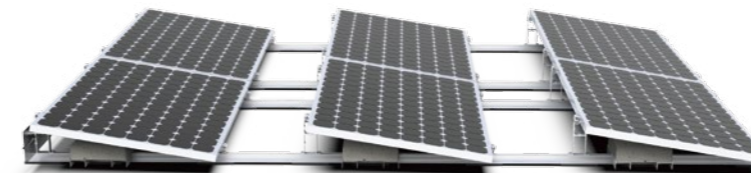


Product Feature:

- Solar panels could withstand greater wind and snow pressure.
- Maximal area utilized.
- Maximal PV quantity installed.
- Maximized roof space utilized, and PV quantity installed.
- Better panel output.
- Solar PV to be fast and easily installed on a flat roof with 10 tilt degree inclination.
- All parts are made of extruded aluminum, with stainless steel 304 fasteners.
- EPDM foam tape is installed at the bottom of the system, separated the roof and system.
- EPDM foam tape provides better friction and compensates for the height difference when the roof is uneven.



East & West 10° for concrete flat roof



South or North 10° for concrete flat roof



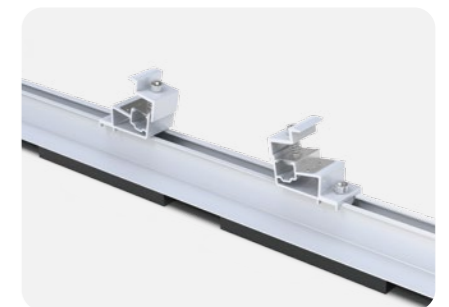
South or North 10° for trapezoidal sheet metal roof

2 Assembly

ERK-BUF-15



ERK-BUR-15



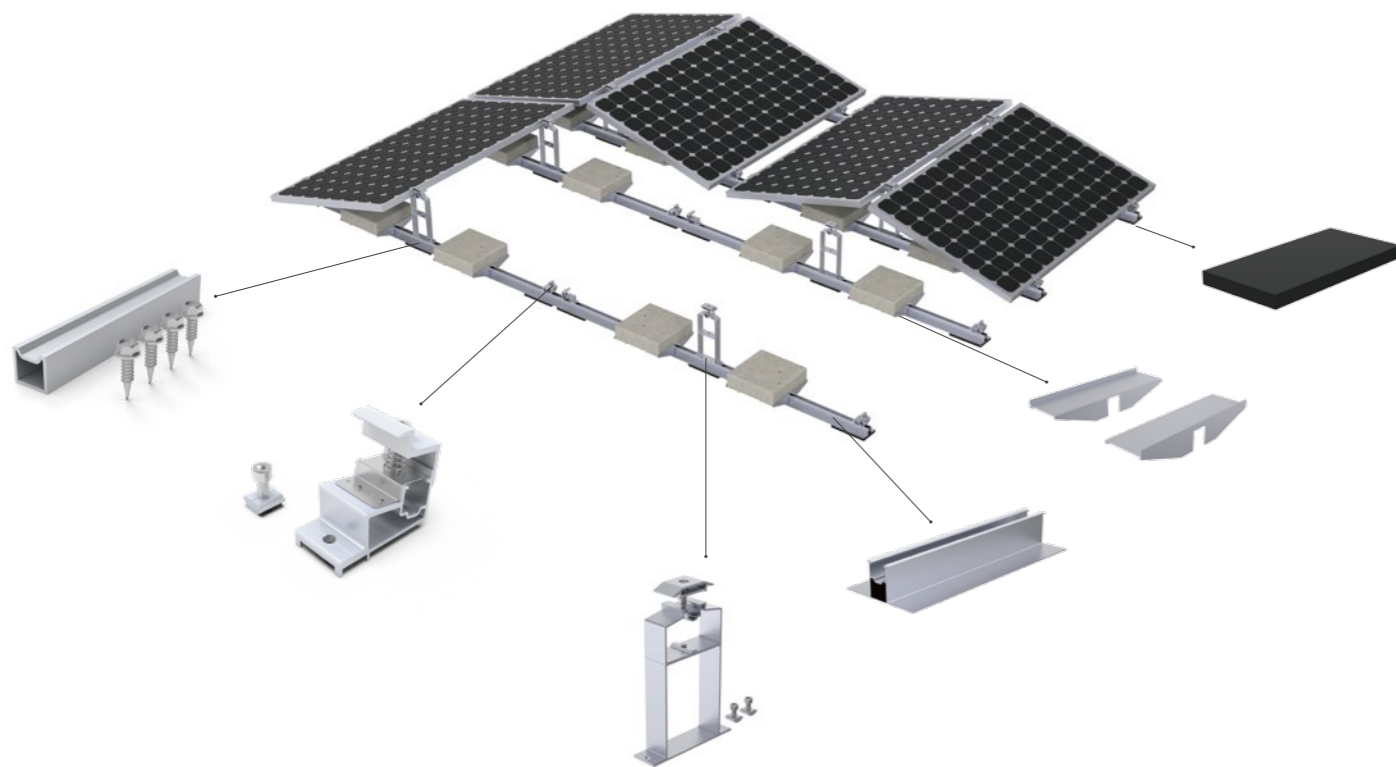
Ballasted-Ult East-West Integrated Rear Leg

Ballasted-Ult East-West integrated rear leg is suitable for the Ballasted-Ult Systems East-West layout installation, it has the same advantages as Ballasted-Ult Systems, can be installed in any position on the long side of the solar panels. Maximize to realize the strength of solar panels against the wind load and snow load. East-West integrated rear leg support simplify the number of installation, making it more easy and convenient, more efficient and faster, can effectively reduce the cost of whole project. Innovative rear leg inner clamp is more convenient for installation and make the whole systems more integrated, there are two choice 10 degree and 15 degree for your choose, compatible with ERK-BUF-10 and ERK-BUF-15.

Technical features:

Product name	Ballasted-Ult East-West integrated rear leg
Application	Concrete flat roof or trapezoidal sheet metal roof
Tilt	10° or 15°
System material	AL6005-T5, EPDM
Fastener material	SUS 304
Finish	Anodized
Module orientation	Landscape

Assembly



Assembly



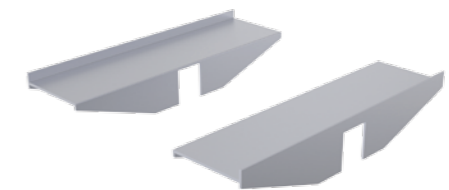
ERK-BUR-10 ERK-BUR-15



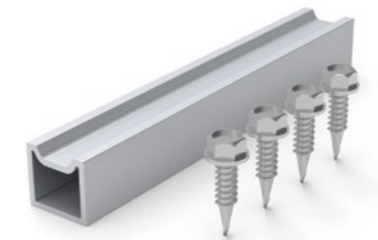
ERK-BIR-10 ERK-BIR-15



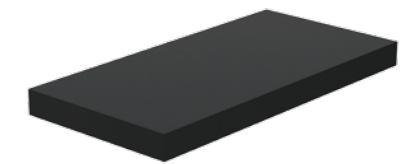
ERK-R41-02



ERK-BST-02

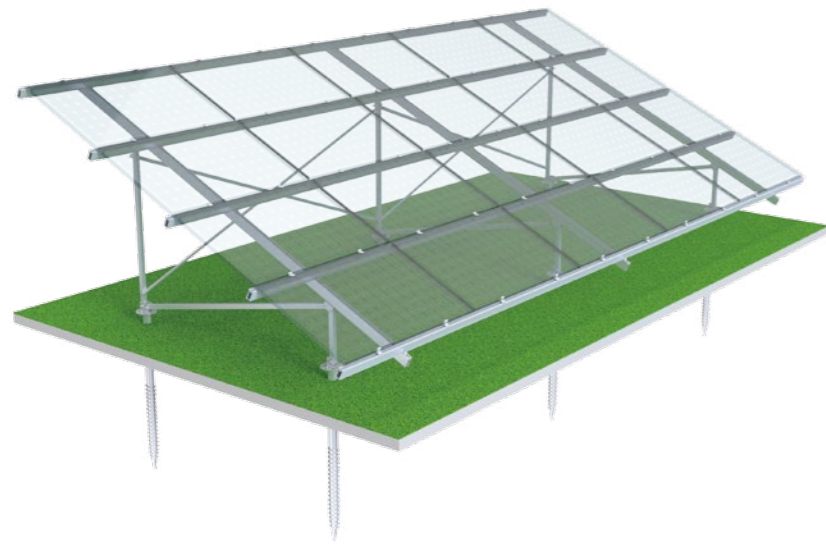


ERK-SFR-04



ERK-EFT-03

Ground Mounting



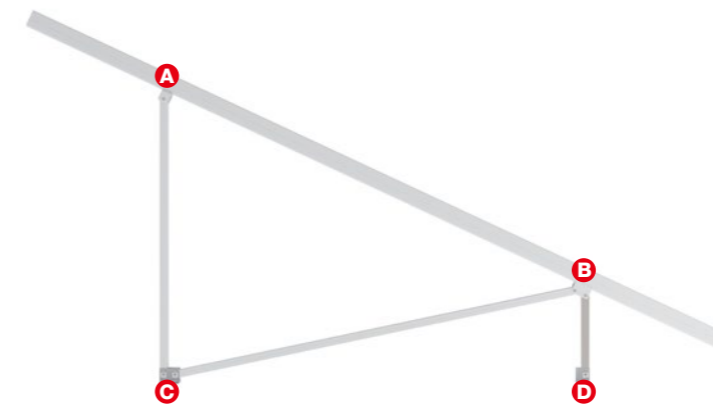
Standard Ground Mounting System

Aluminum ground mount, optimized for lightweight, quick and efficient installation with flexible on engineering upon site conditions. Optional on foundation by ground screw or concrete. Maximize pre-assembled before shipment

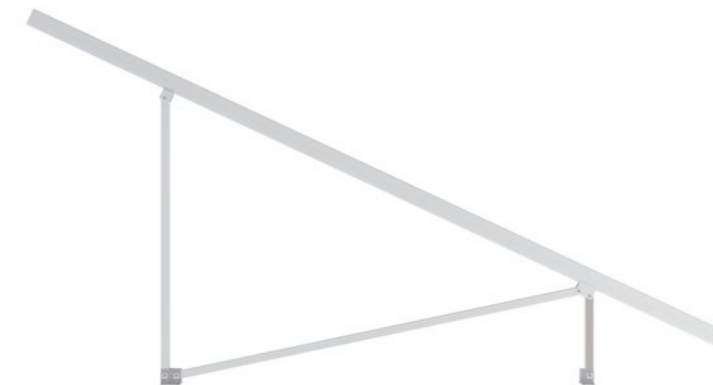
Technical features:

Product name	Standard ground mounting system
Application	Flat concrete roof, open terrain
Inclination	Customized
Material	AL 6005-T5, SUS 304, Q235
Finish	AL 6005-T5 Anodized, Q235 Hot-dip galvanizing
Module orientation	Landscape or Portrait

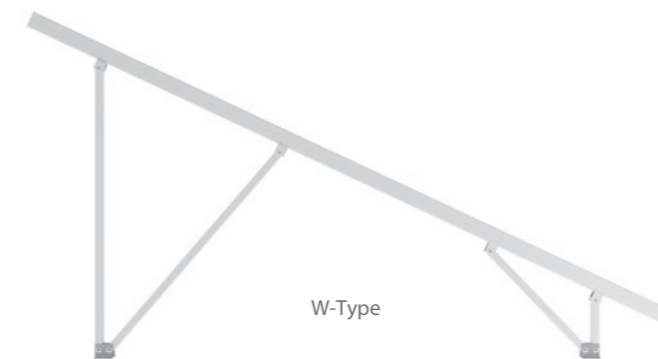
1 Assembly



Ground mounting system has been maximized pre-assembly before shipment, which make the installation more convenient.



N-Type



W-Type

2 Pre-Assembly



Depending on the different design conditions, pre-assembly support is generally designed into the following two shapes:

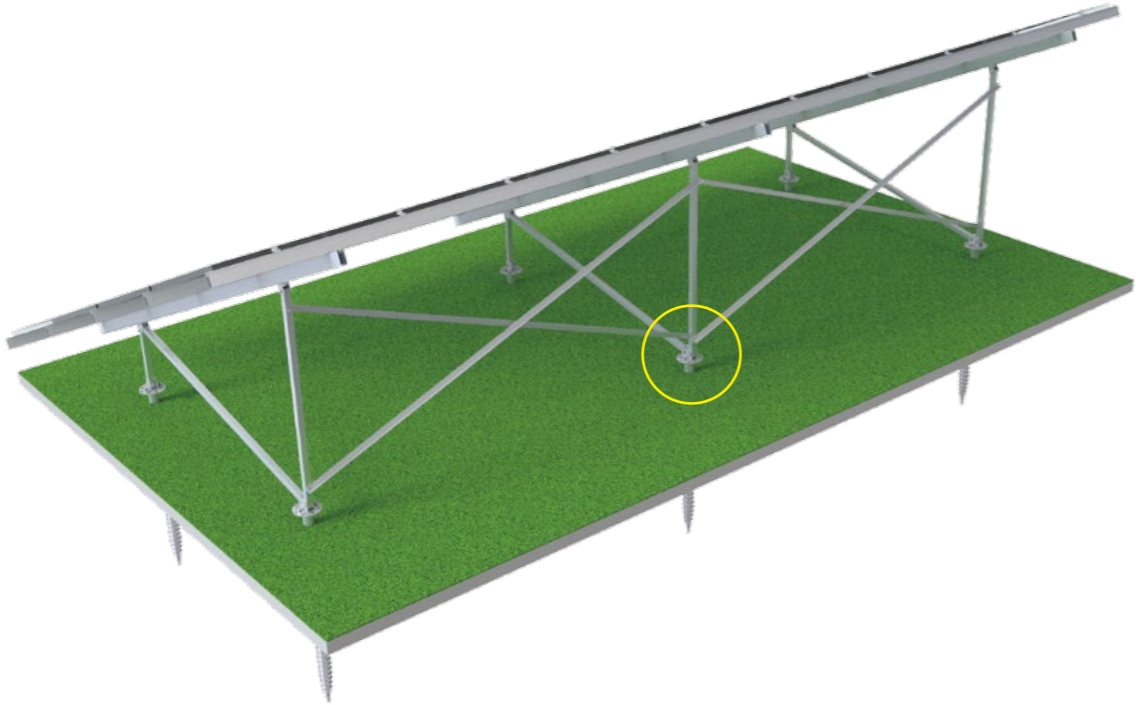
The N-Type pre-assembly support is mainly used for the small wind & snow load condition projects.(2-4 columns)

The W-type pre-assembly support is mainly for the 4-5 columns wind & snow load condition projects. We will add cross support to make the structure stronger if the ground height is higher or wind & snow load is larger.

Ground Mounting

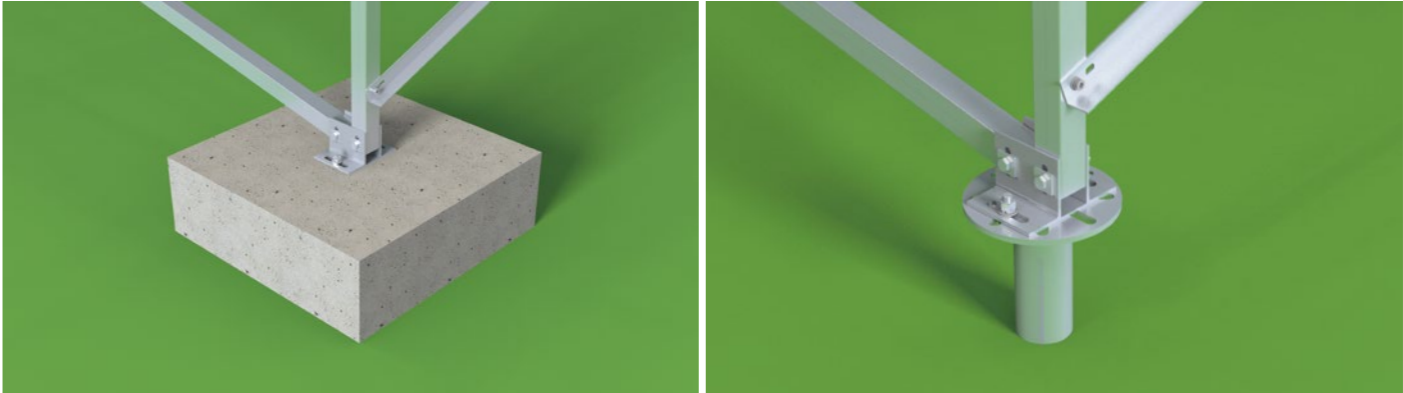


3 Cross



4 Foundation

Ground mounting system are commonly used for Concrete Foundation and Screw Foundation.



Concrete Foundation

Screw Foundation

Item	Concrete Foundation	Screw Foundation
Applicable terrain	Flat, Even Tilt, Ladder	
Applicable geology (reference)	Random	SWS3≤N≤10 SWS Test, cohesive soil 3 ≤N≤10
Difficulty Level	Complicated	Easy
Cost	Higher	Lower
Adjustment range	Not convenient to adjust the height of base	Larger
Corrosion resistance	Anti-Corrosion	Hot-dip galvanizing on the surface of the screw foundation, which has met the anti-corrosion requirements of the service life

Conventional pile compression and tensile strength reference values(KN)								
Ground Screw Length	N=3		N=5		N=7		N=10	
	Resistance	compression Resistance	Resistance	compression Resistance	Resistance	compression Resistance	Resistance	compression Resistance
1600	8.7	9.1	14.6	15.2	20.4	21.4	29.2	30.6
1800	9.9	10.2	16.5	17.1	23.1	24	33	34.4
2000	11	11.4	18.4	19	25.8	26.7	36.8	38.2
2200	12.2	12.5	20.3	21	28.4	29.4	40.6	42
2500	13.9	14.2	23.2	23.8	32.4	33.4	46.4	47.8

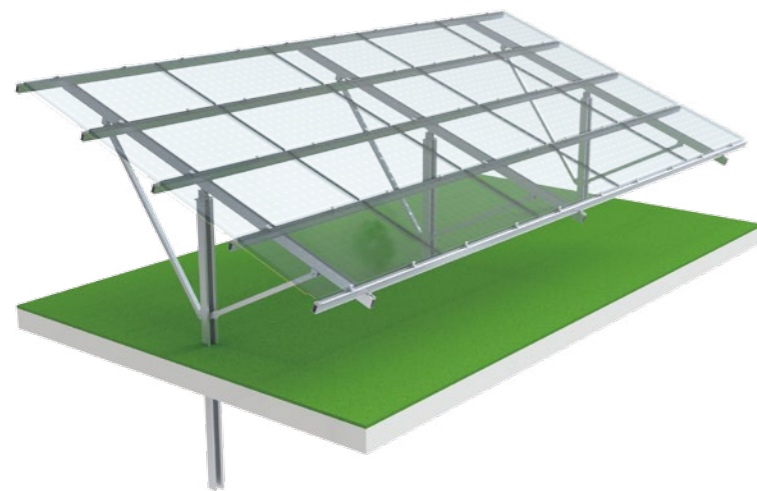
Remarks: The N value of the soil in this table are based on the Swedish penetration test (SWS).

Ground Mounting



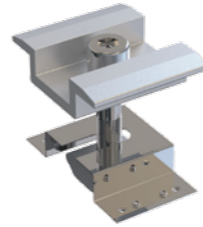
U Pile Ground Mounting System

Enerack U Pile Ground Mounting Systems suitable for large scale power station installation, Pile to the ground makes installation faster and lower cost than others. Each components are Maximize pre-assembled, widely save your labor cost and installation time. Customization allowed according to project wind & snow load, provide economic & effective solutions.



1 Assembly

Mid clamp



Rail



End clamp



Rail fixing clamp



Main structure



The U type Pile Ground Mounting System has been folded into a rectangular shape before shipment. Easy to transport.

Technical features:

Product name	U Pile ground mounting system
Application	Open terrain
Inclination	Customized
Material	AL 6005-T5, SUS 304, Q235
Finish	AL 6005-T5 Anodized, Q235 Hot-dip galvanizing
Module orientation	Landscape or Portrait

Penetration depth	Conventional U pile compression and tensile strength reference values (KN)							
	N=3		N=5		N=7		N=10	
	Resistance	Compression Resistance	Resistance	Compression Resistance	Resistance	Compression Resistance	Resistance	Compression Resistance
1500	9.5	11.5	15.7	19.3	21.9	27	31.13	38.6
1600	10.1	12.3	16.7	20.6	23.3	28.8	32.35	41.2
1700	10.8	13.1	17.8	21.8	24.8	30.6	33.7	43.7
1800	11.4	13.9	18.8	23.1	26.2	32.4	34.4	46.3
2000	12.6	15.4	20.8	25.7	29.1	36	45.65	51.5
2200	13.8	17	22.9	28.3	32	39.6	47	56.6
2500	15.7	19.3	26	32.1	36.3	45	51.5	64.3

Remarks: The N value of the soil in this table are based on the Swedish penetration test (SWS).

2 Main structure & components

U Pile



Beam



Square tube



Holder



H Support

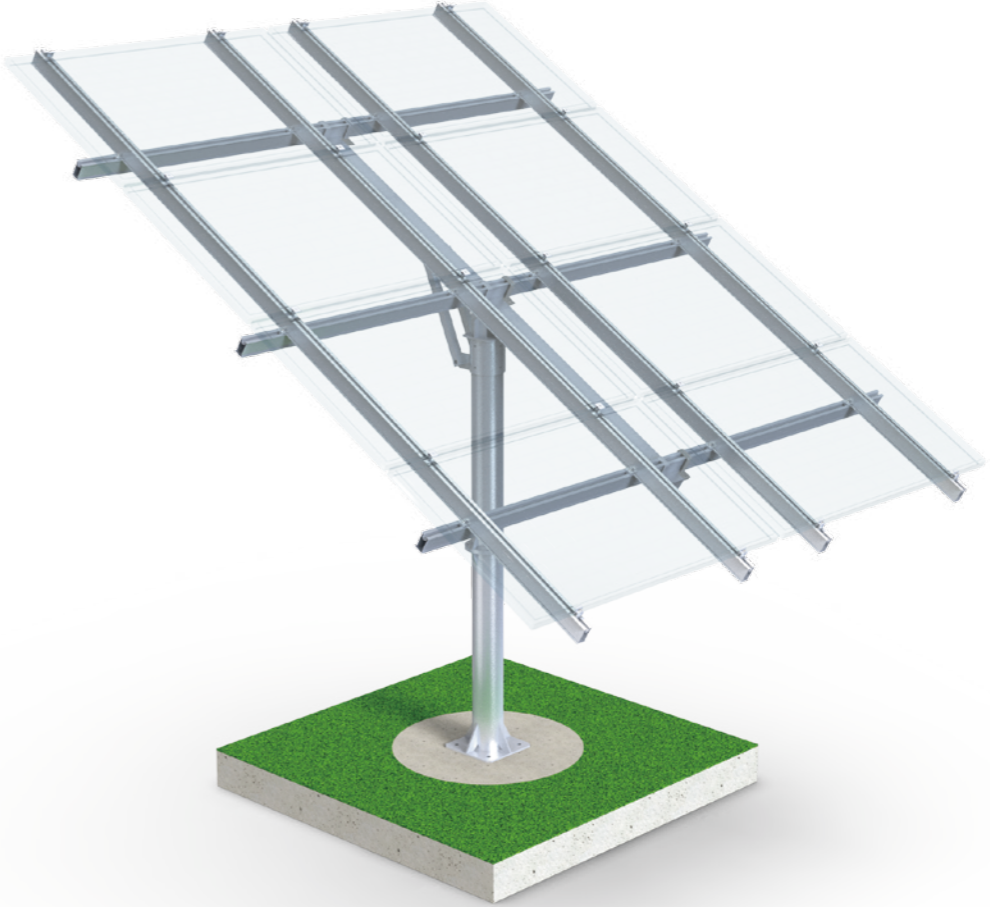


Pole Mounting



Enerack pole mounting system have different angles options of 3, 4, 6, 8 panels. Simple design is ideal for remote off-grid applications such as water pumps for farm, or small residential and commercial systems etc. It can meet the customers need different angles and power generation. Packing in wooden cases each, easy to transport and install.

Technical features:	
Product name	Pole mounting system;
Application	Outdoor
Inclination	0-40°
Material	AL6005-T5, SUS304, Q235
Finish	AL 6005-T5 Anodized, Q235 Hot-dip galvanizin



8 Panels Pole Mounting



3 Panels Pole Mounting

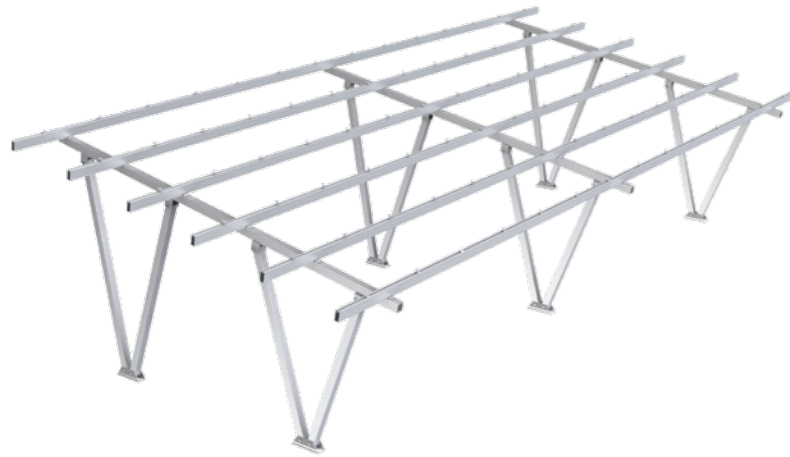


4 Panels Pole Mounting



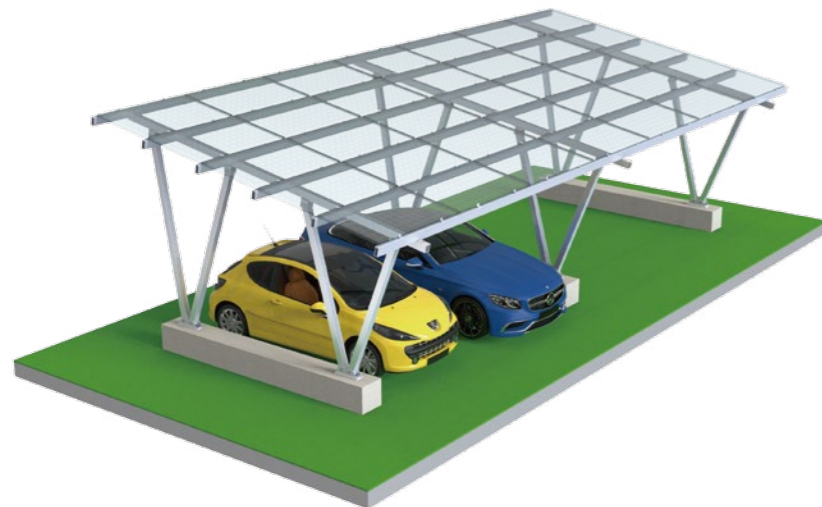
6 Panels Pole Mounting

Carport Mounting



Carport Mounting System

Enerack Carport Mounting Systems offers a simplified and economical solutions that provides a perfect combination of Shade parking and solar power generation as well as electric vehicle charging. It applied for family parking, commercial parking, awnings and even bus stops.



1 Structure & components

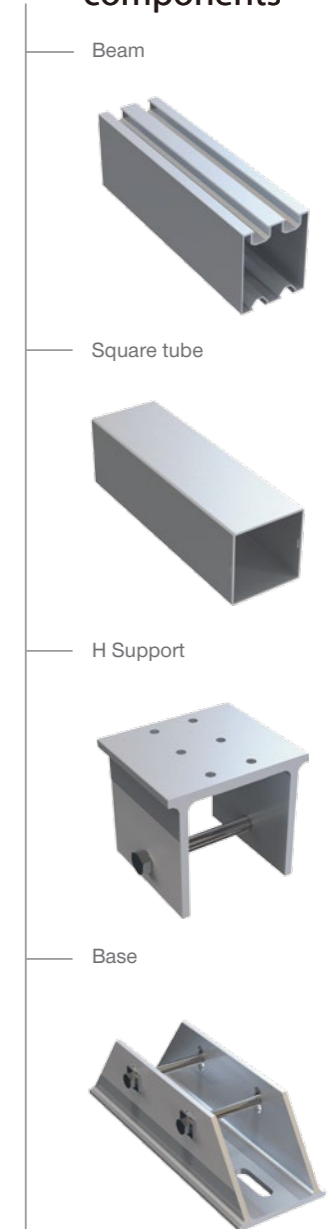


highly pre-assembled main structure for solar modules landscape or portrait 5°/ 8°/10°inclination or custom customized and engineered to project maximal span up to 5.4m cover up to 2 parking spaces per span.

Technical features:

Product name	Carport mounting system
Application	Solar parking structure
Inclination	5°, 8°, 10° or customized
Material	AL 6005-T5, SUS 304
Finish	AL 6005-T5 Anodized
Module orientation	Landscape

2 Main structure & components



Waterproof Carport System

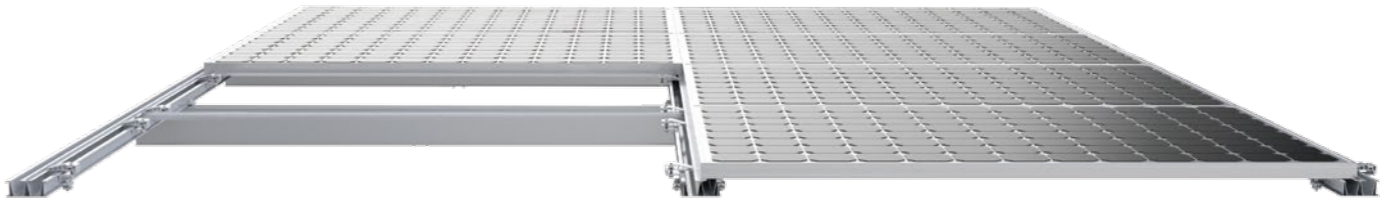


Our carport systems are sold to Africa, the Middle East, Southeast Asia, Europe and the South America. The idle area of the parking shed is used to build a photovoltaic parking shed, and the combination of photovoltaic power generation and carport is the simplest one in the combination of photovoltaic and building. It can not only achieve all the functions of the traditional carport, but also bring electricity generation benefits to the owner. It is stored in the battery by the charging device or directly supplied to the electric vehicle to charge for self-use. You can even use extra power to get online. Using aluminum alloy structure bracket, simple installation, generous, fashionable, elegant.

Product Overview:	
Install Site	Flat outdoor
Material	AL6005-T5, SUS304
Standards	AS/NZ1170.2、 JIS C 8955、 MCS 012、 TUV、 UL2703 etc
Tilt Angle	5°, 8°, 10° or customized

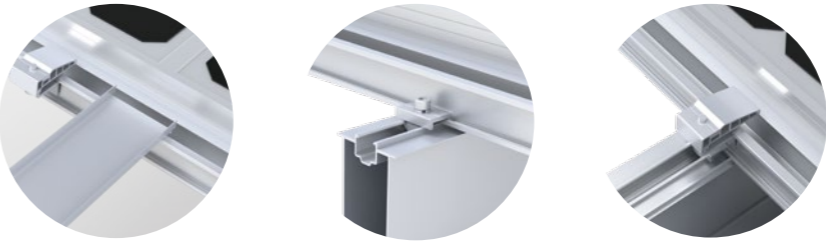
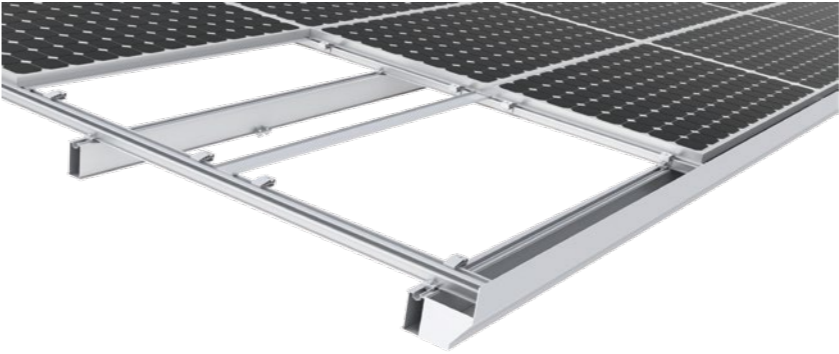
1 Assembly

- ERK-R125 
- ERK-CPS 
- ERK-B110 
- ERK-CPH-01 
- ERK-CPS-02 
- ERK-CEC 


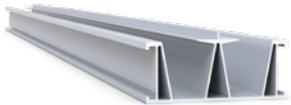

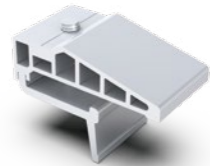


- Features:**
1. Good heat absorption.
 2. Good waterproof and rain protection, convenient installation, and flexibility.
 3. Make full use of the original site to provide green energy.
 4. Suitable for frame panel: Poly modules, double glass module etc.

Installation place: home, company, shopping mall, large parking lot.
Parking category: battery car/bicycle, car, bus.
Number of parking Spaces: 1 parking space, 2 parking Spaces, 3 parking Spaces, multiple parking Spaces (large span).
By row: single row parking space, double row parking space.



2 Component List

- ERK-HWT 
- ERK-RWT 
- ERK-GRC 
- ERK-PVC 

Product Catalog Solar Mounting Solutions



WhatsApp



Web



Xiamen Enerack Technology Co., Ltd.

Tel: +86 -592-5669285

Mail: info@enerack.com

Fax: +86 -592-5669235

web: www.enerack.com

Add: 203A, NO.6 Huli Avenue, Huli District, Xiamen, China